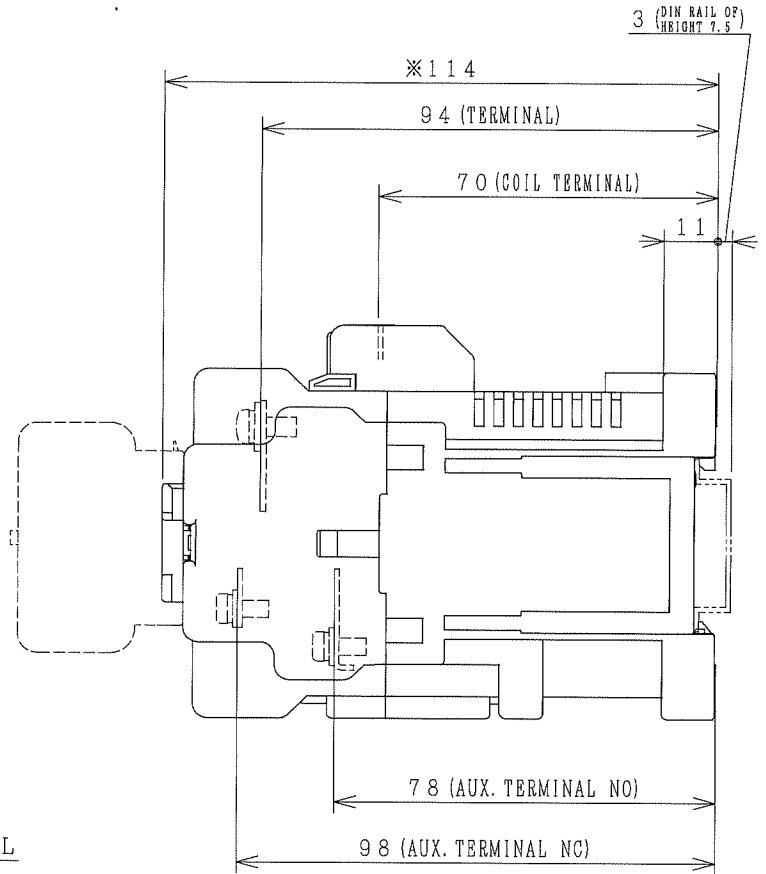
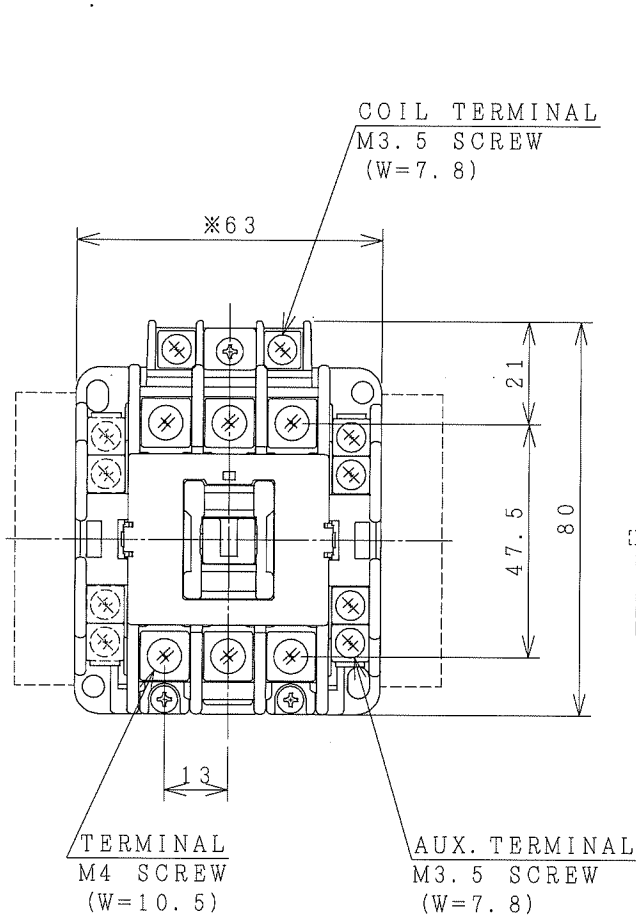


HITACHI ELECTROMAGNETIC CONTACTOR

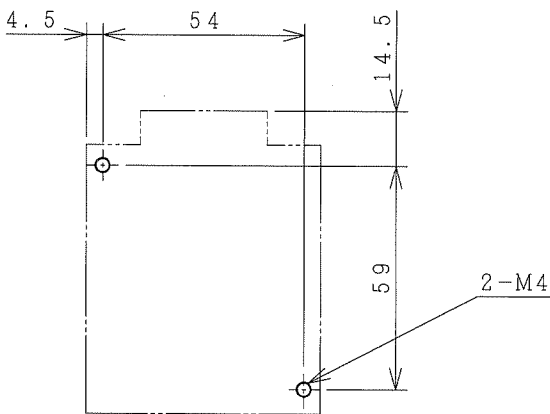
Type	Rated insulation voltage (Ui)	Max. rated capacity of motor			Rated thermal current (AC1 = Ith)	Applicable standard	Aux. Contact	Weight
		240V	7.5kW	32A				
HS32-G	AC 690 V	440V	15kW	32A	32 A	IEC 60947-4-1	1a1b or 2a2b	0.65 kg
		240V	7.5kW	32A				

※WITH AUX. CONTACT SIDE ON UNIT = 88mm.

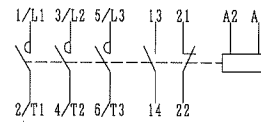
※WITH AUX. CONTACT HAED ON UNIT = 145mm.



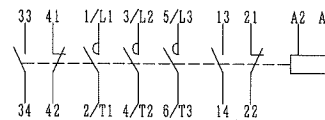
OUTLINE DIMENSIONS.



MOUNTING HOLES.



AUX. CONTACTS : 1 a 1 b



AUX. CONTACTS : 2 a 2 b
CONTACTS ARRANGEMENT.

54 x 56

54 x 60

ALSO POSSIBLE.

(W=) : WIDTH OF TERMINAL.

※REMARK

- DIMENSION UNIT = Millimeter (mm).

- (a) = AUX. CONTACT NORMALLY OPENED.

- (b) = AUX. CONTACT NORMALLY CLOSED.

DWN.	O. SITTICHAI	14/05/18	PROJECTION	TITLE
CHKD.	J. Janyu C. Kiattharak		SCALE	DIMENSION OF HS32-G
APPD.	S. Sugai		NTS.	
HITACHI Hitachi Industrial Technology (Thailand), Ltd.				HITT WORKS DWG. No. 4HTN001176
				REV. 00 SH. 01 01