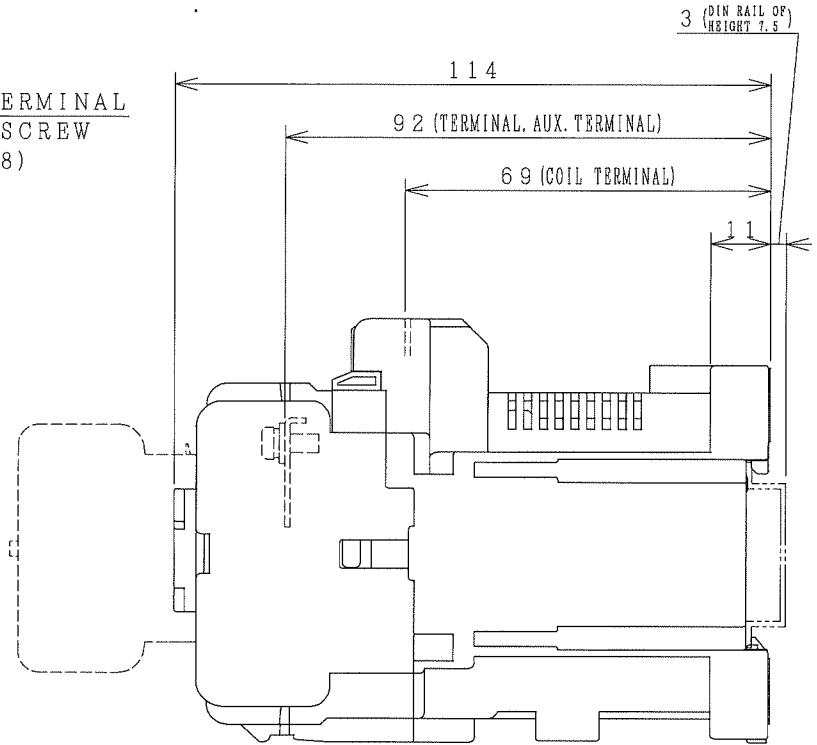
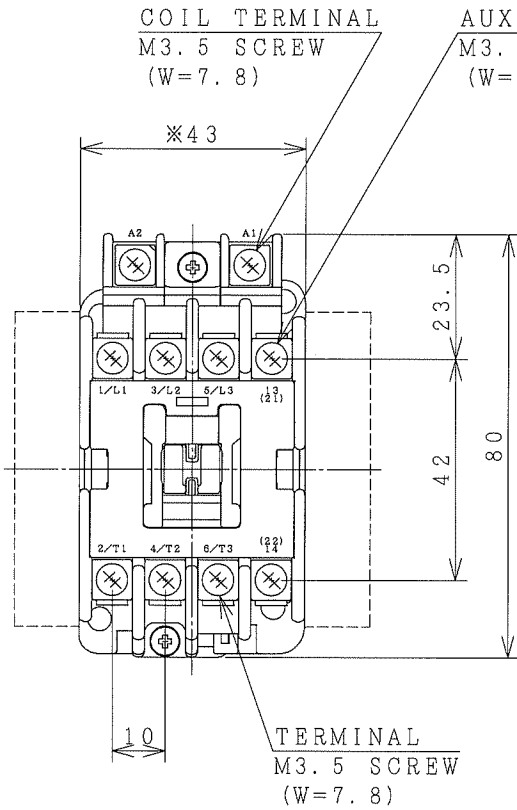


# HITACHI ELECTROMAGNETIC CONTACTOR

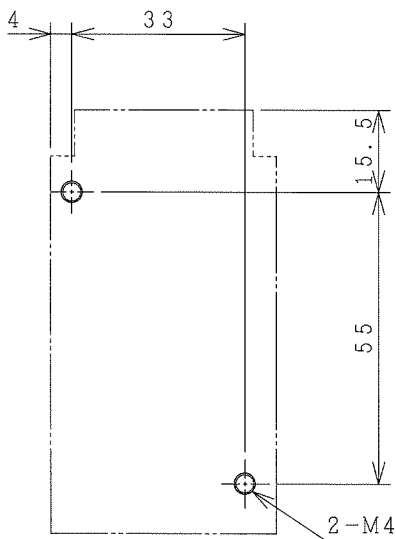
Type	Rated insulation voltage (Ui)	Max. rated capacity of motor			Rated thermal current (AC1 = Ith)	Applicable standard	Aux. Contact	Weight
		240V	4.5kW	18A				
HS18-G	690 V	440V	7.5kW	18A	20 A	IEC 60947-4-1	1a	0.62 kg
							or	

※WITH AUX. CONTACT SIDE ON UNIT = 68mm.

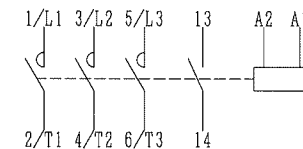
※WITH AUX. CONTACT HEAD ON UNIT = 145mm.



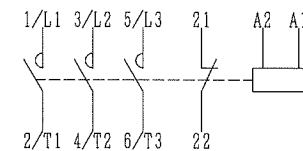
OUTLINE DIMENSIONS.



MOUNTING HOLES.



AUX. CONTACTS: 1a



AUX. CONTACTS: 1b  
CONTACTS ARRANGEMENT.

※REMARK

- DIMENSION UNIT = Millimeter (mm).
- (a) = AUX. CONTACT NORMALLY OPENED.
- (b) = AUX. CONTACT NORMALLY CLOSED.

- 30 x 48
- 34 x 48
- 34 x 52
- 35 x 50

ALSO POSSIBLE.

(W) : WIDTH OF TERMINAL.

DWN. T. THADAPONG	14/05/18	PROJECTION	TITLE
CHKD. J. Somkoo	S	SCALE	DIMENSION OF HS18-G
C. Kittisak		NTS.	
APPD. S. Sugai			HITT WORKS DWG. No.
<b>HITACHI</b> Hitachi Industrial Technology (Thailand), Ltd.			REV.
			00
			SH.
			01
4HTN001174			01