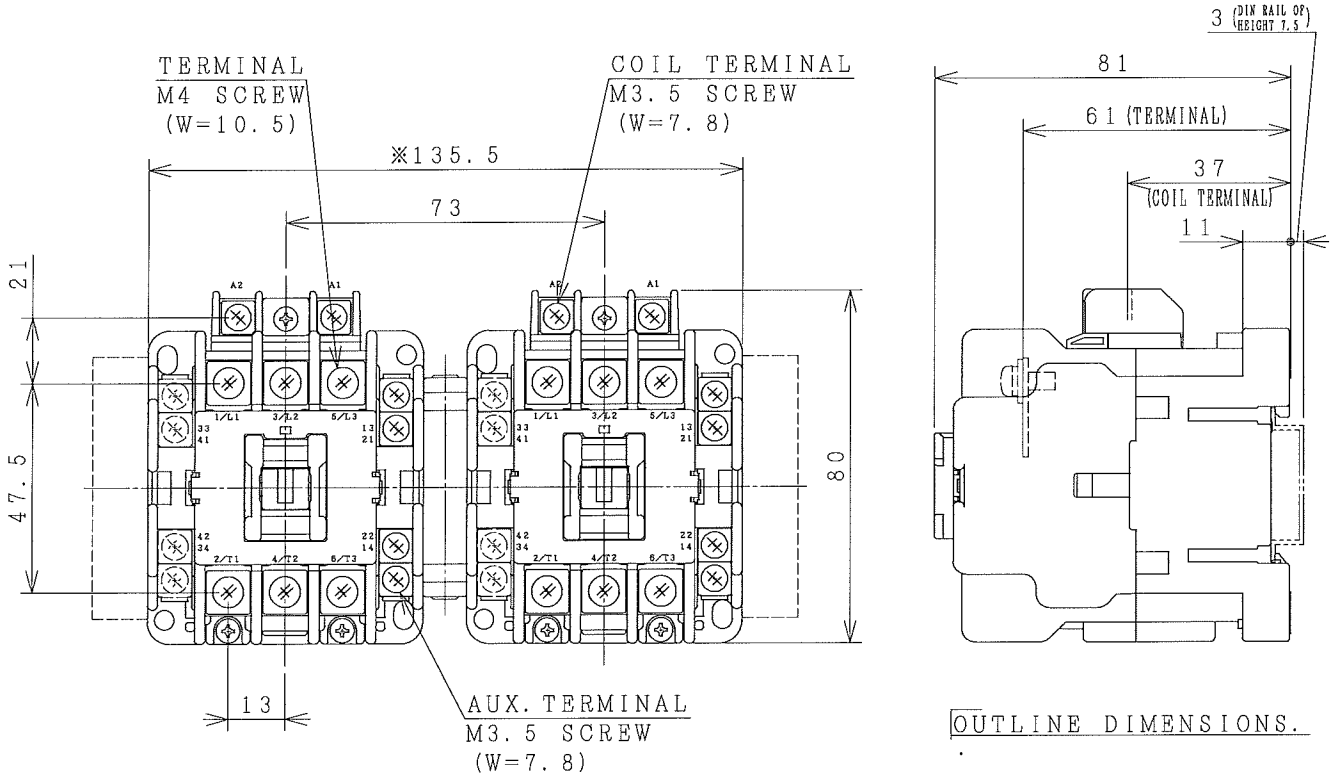


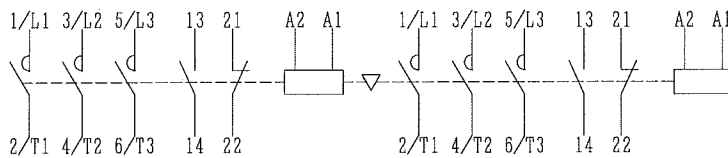
HITACHI ELECTROMAGNETIC CONTACTOR

Type	Rated insulation voltage (Ui)	Max. rated capacity of motor			Rated thermal current (AC1 = Ith)	Applicable standard	Aux. Contact	Weight
		240V	7.5kW	32A				
HS32-R	690 V	440V	15kW	32A	32 A	IEC 60947-4-1	1a1b x2 or 2a2b x2	0.84 kg
		240V	7.5kW	32A				

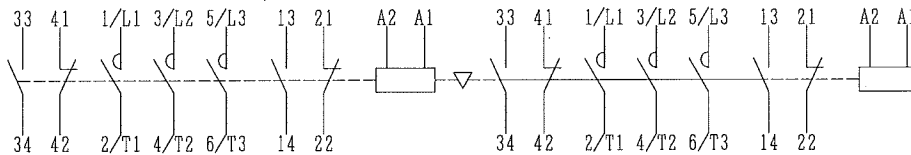
※WITH AUX. CONTACT SIDE ON UNIT = 160.5mm.



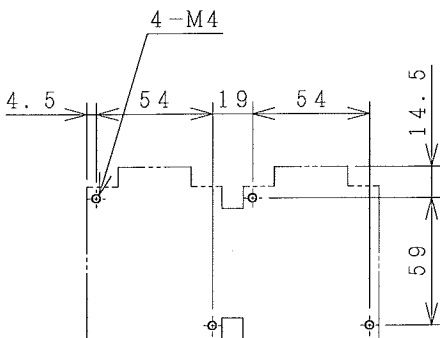
OUTLINE DIMENSIONS.



AUX. CONTACTS : 1 a 1 b x 2



AUX. CONTACTS : 2 a 2 b x 2
CONTACTS ARRANGEMENT.



MOUNTING HOLES.

(W=) : WIDTH OF TERMINAL.

※REMARK

- DIMENSION UNIT = Millimeter (mm).
- (a) = AUX. CONTACT NORMALLY OPENED.
- (b) = AUX. CONTACT NORMALLY CLOSED.

DWN. O. SITTICHAI	25/07/18	PROJECTION	TITLE
CHKD. J. Janyak		SCALE	DIMENSION OF HS32-R
APPD. S. Sugai		NTS.	
HITT WORKS DWG. No.			REV.
HITACHI Hitachi Industrial Technology (Thailand), Ltd.			00
			01
4HTN001156			01