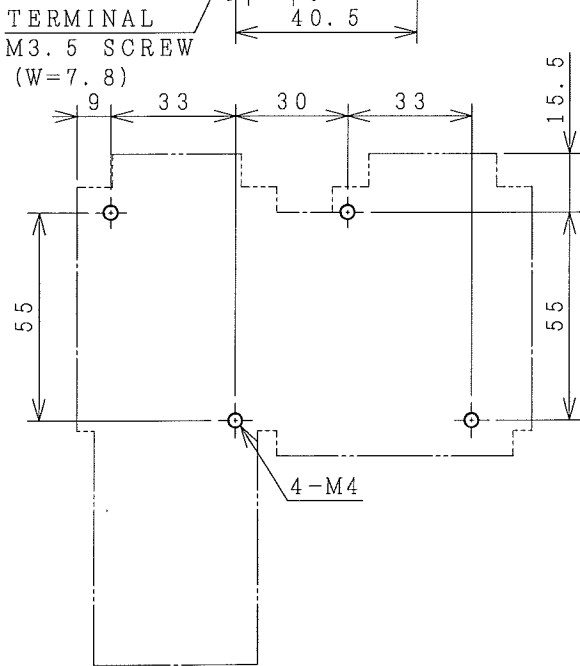
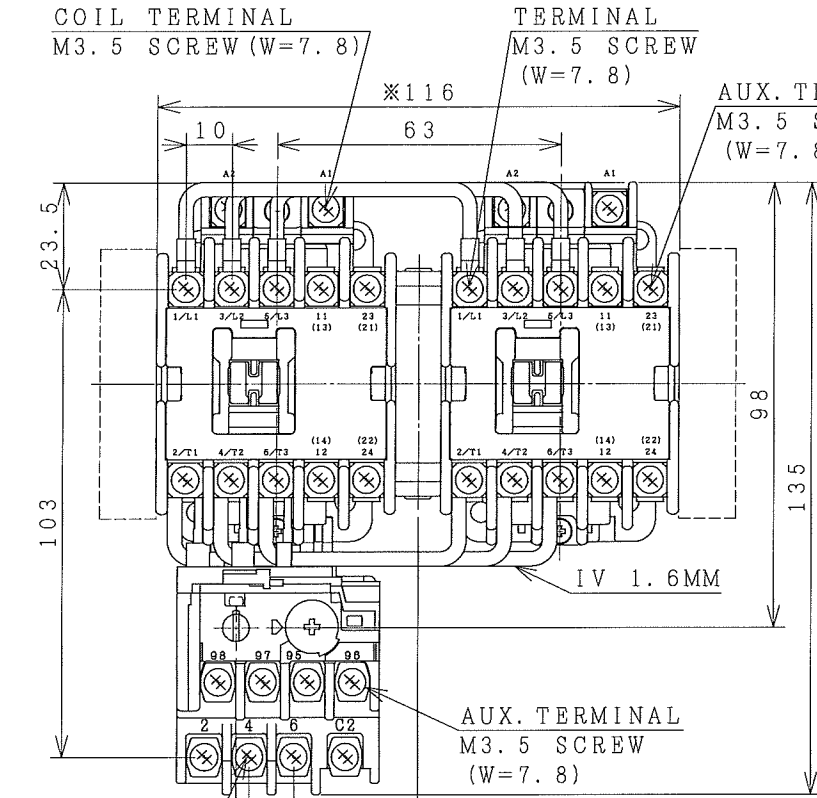


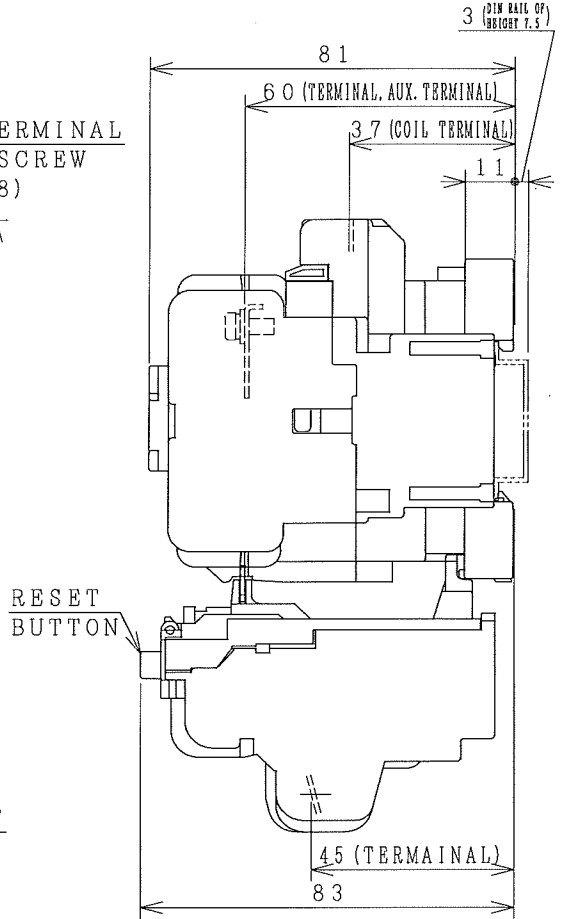
HITACHI ELECTROMAGNETIC SWITCH

Type	Rated insulation voltage (Ui)	Max. rated capacity of motor			Rated thermal current (AC1 = Ith)	Applicable standard	Aux. Contact	Weight
		240V	3.5kW	13A				
HS11-RT	AC 690 V	240V	3.5kW	13A	20 A	IBC 60947-4-1	1a1b x 2 OR 2a x 2 OR 2b x 2	0.90 kg
HS11-RTK		440V	5.5kW	12A				

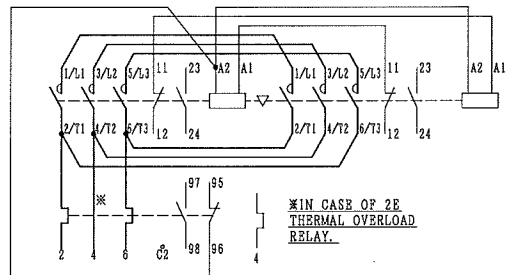
※WITH AUX. CONTACT SIDE ON UNIT = 142mm.



MOUNTING HOLES.



OUTLINE DIMENSIONS.



AUX. CONTACTS: 1a1b x 2 CONTACTS ARRANGEMENT.

※REMARK

- DIMENSION UNIT = Millimeter (mm).
- (a) = AUX. CONTACT NORMALLY OPENED.
- (b) = AUX. CONTACT NORMALLY CLOSED.

DWN. O. SITTICHAJ	27/07/18	PROJECTION	TITLE
CHKD. J. Jantakul		SCALE	DIMENSION OF HS11-RT, RTK
APPD. C. Krattisak		NTS.	
HITACHI Hitachi Industrial Technology (Thailand), Ltd.			HITT WORKS DWG. No.
			4HTN001145
			REV. 00
			SH. 01
			01

(W=) : WIDTH OF TERMINAL.