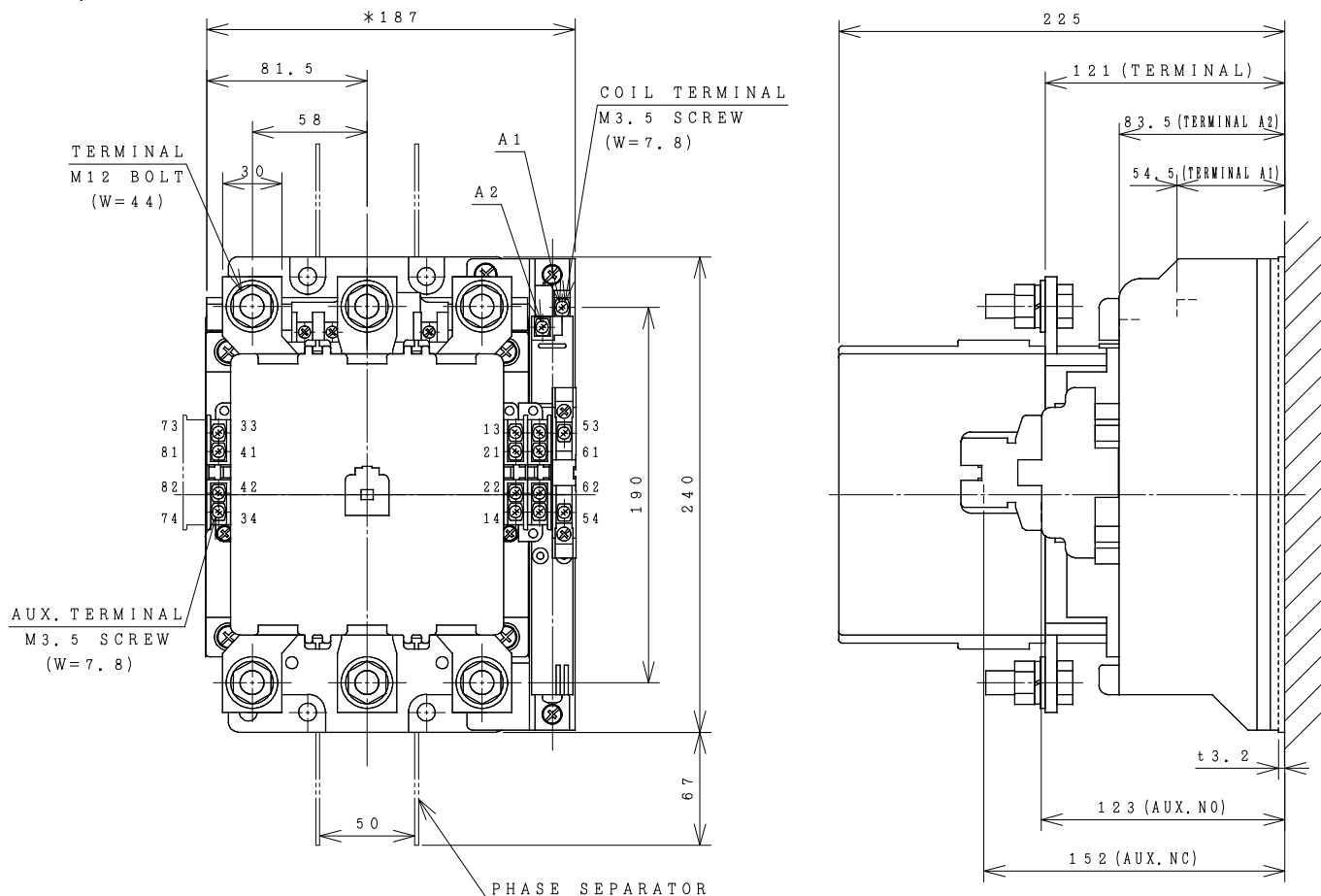


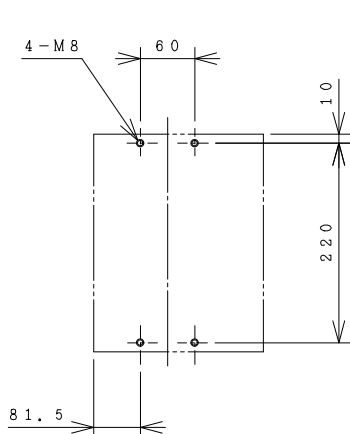
HITACHI ELECTROMAGNETIC CONTACTOR

| Type | Rated insulation voltage (Ui) | Max. rated capacity of motor | | | Rated thermal current (AC1 = Ith) | Applicable standard | Aux. Contact | Weight |
|-------|-------------------------------|------------------------------|-------|------|-----------------------------------|---------------------|--------------|-----------|
| | | 240V | 90kW | 300A | | | | |
| H300C | AC 660 V | 440V | 150kW | 300A | 350 A | IEC 60947-4-1 | 3a3b | 9.7 kg |
| | | 240V | 90kW | 300A | | | | |

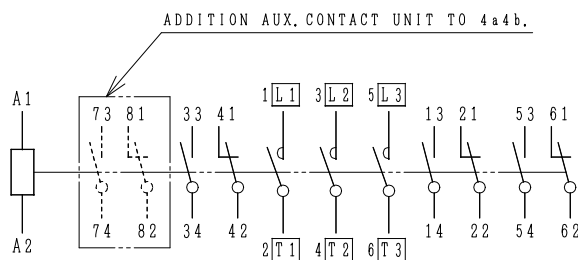
*WITH AUX. CONTACT 4 a 4 b = 199 mm.



OUTLINE DIMENSIONS.



MOUNTING HOLES.



CONTACTS ARRANGEMENT.

(Reference 43055973R02).

*REMARK

- DIMENSION UNIT = Millimeter (mm.).
- (a) = AUX. CONTACT NORMALLY OPENED.
- (b) = AUX. CONTACT NORMALLY CLOSED.

| | | | |
|--|----------|---------------|--|
| DWN. S. CHAIAMPOL | 30/08/16 | PROJECTION | TITLE |
| CHKD. <i>Jan-a</i> | S | SCALE NTS. | DIMENSION OF H300C |
| APPD. <i>C.Kiattisak</i> | | | |
| <p>HITACHI Hitachi Industrial Technology (Thailand), Ltd.</p> | | | <p>4HTN000920</p> |
| | | | <p>REV.</p> <p>00</p> <p>SH.</p> <p>01</p> <p>01</p> |

(W=) : WIDTH OF TERMINAL.