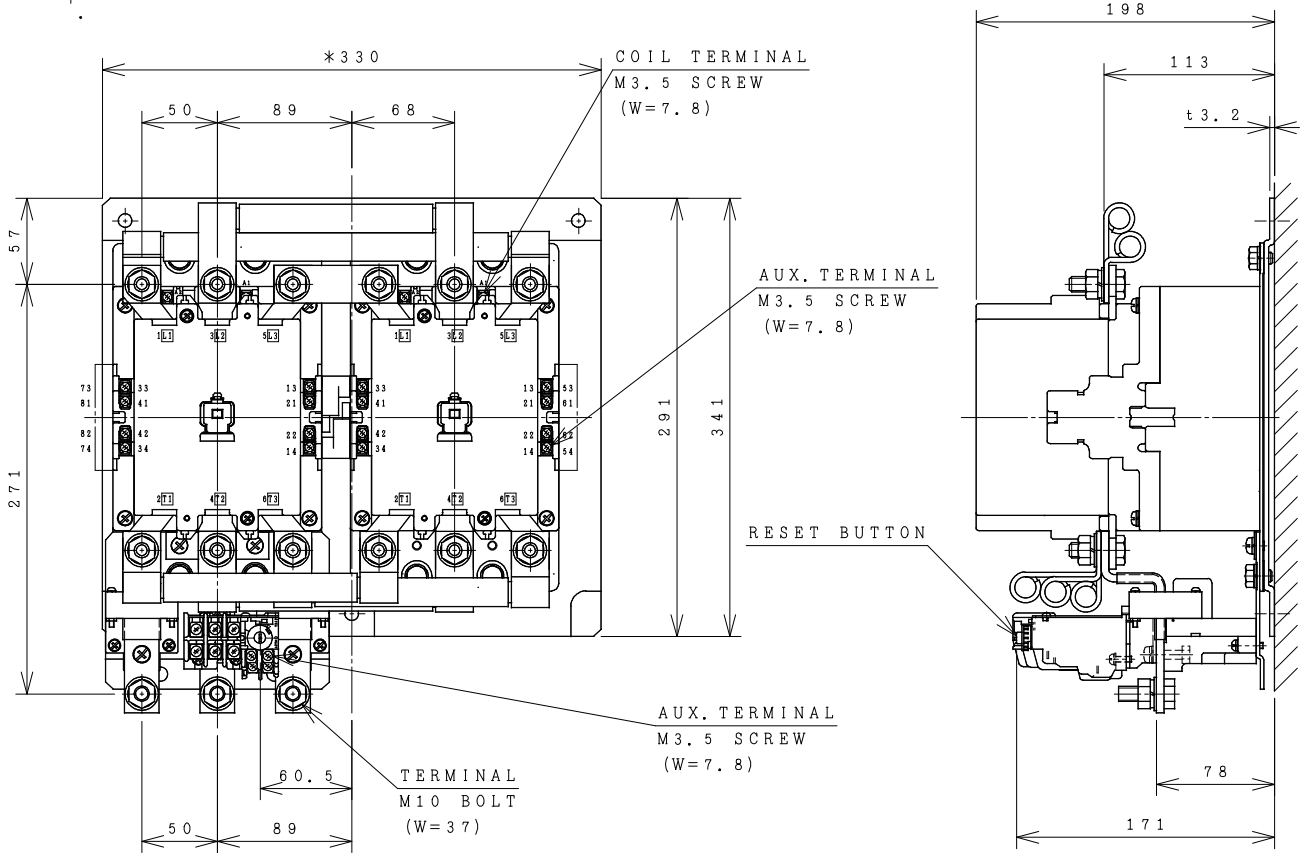


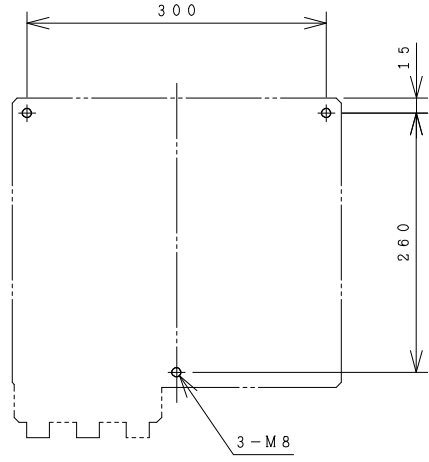
HITACHI ELECTROMAGNETIC SWITCH

Type	Rated insulation voltage (Ui)	Max. rated capacity of motor			Rated thermal current (AC1 = I _{th})	Applicable standard	Aux. Contact	Weight
H250C-RT	AC 660 V	240V	75kW	240A	300 A	IEC 60947-4-1	(2a2b) x 2	18 kg
H250C-RTK		440V	120kW	240A				

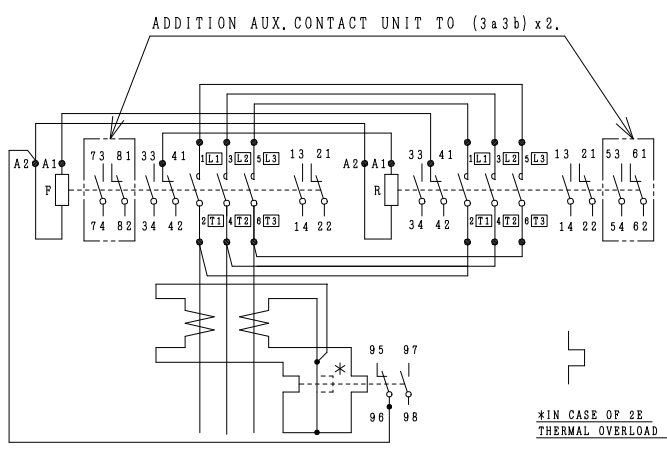
*WITH AUX. CONTACT (3a3b) x 2 = 335 mm.



OUTLINE DIMENSIONS.



MOUNTING HOLES.



CONTACTS ARRANGEMENT.

(Reference 43057506R03).

(W=) : WIDTH OF TERMINAL.
 *REMARK
 - DIMENSION UNIT = Millimeter (mm.).
 - (a) = AUX. CONTACT NORMALLY OPENED.
 - (b) = AUX. CONTACT NORMALLY CLOSED.

DWN. S. CHAIAMPOL	29/08/16	PROJECTION	TITLE
CHKD. <i>C. Kiattisak</i>		SCALE	DIMENSION OF H250C-RT, RTK
APPD. <i>T. Kijisudh</i>		NTS.	
HITACHI Hitachi Industrial Technology (Thailand), Ltd.			HITT WORKS DWG. No. 4HTN000914
			REV. 00 SH. 01 01