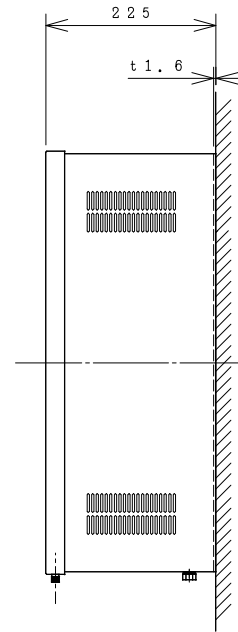
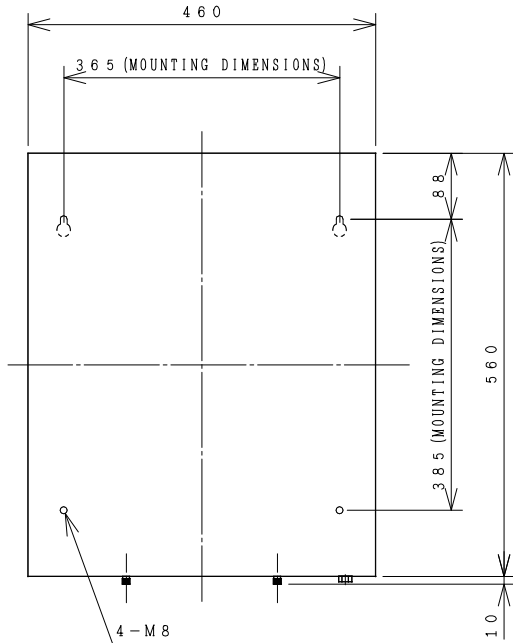
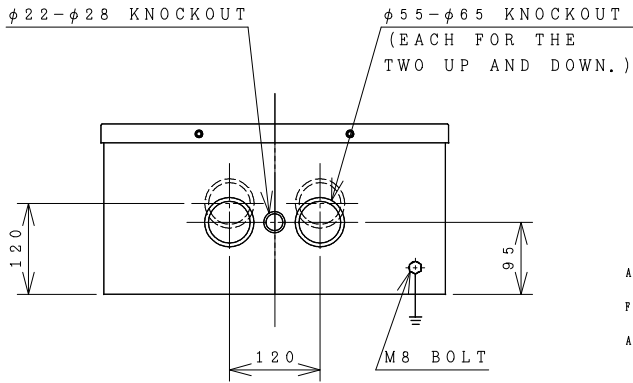


HITACHI ELECTROMAGNETIC SWITCH

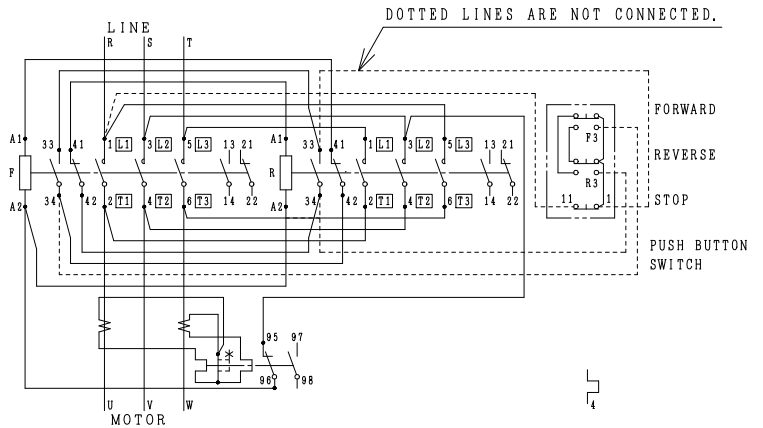
Type	Rated insulation voltage (Ui)	Max. rated capacity of motor			Rated thermal current (AC1 = I _{th})	Applicable standard	Aux. Contact	Weight
		240V	55kW	182A				
SH200C-RT	AC 660	240V	55kW	182A	180 A	IEC 60947-4-1	(2a2b) x 2	29 kg
SH200C-RTK	V	440V	90kW	180A				



OUTLINE DIMENSIONS.



MOUNTING HOLES.



CONTACTS ARRANGEMENT.

		TERMINAL SCREW	WIDTH OF TERMINAL
MAIN CIRCUIT	CONTACTOR	M10	37
	OVERLOAD RELAY	M10	37
OPERATION CIRCUIT	CONTACTOR	M3, 5	7, 8
	OVERLOAD RELAY	M3, 5	7, 8

REMARK

- DIMENSION UNIT = Millimeter (mm.).
- (a) = AUX. CONTACT NORMALLY OPENED.
- (b) = AUX. CONTACT NORMALLY CLOSED.

(Reference 43064013R01).

DWN.	S. CHAIAMPOL	29/08/16	PROJECTION	TITLE
CHKD.	<i>C. Kiattisak</i>		SCALE	DIMENSION OF SH200C-RT, RTK
APPD.	<i>T. Kijisudh</i>		NTS.	
HITT WORKS DWG. No.				REV.
HITACHI Hitachi Industrial Technology (Thailand), Ltd.				00
				01
				01

4HTN000910