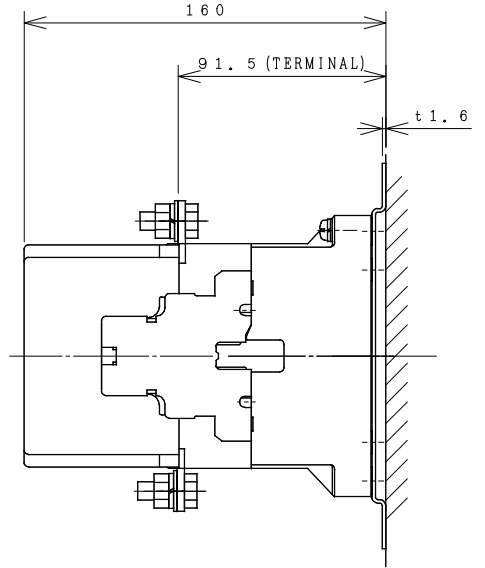
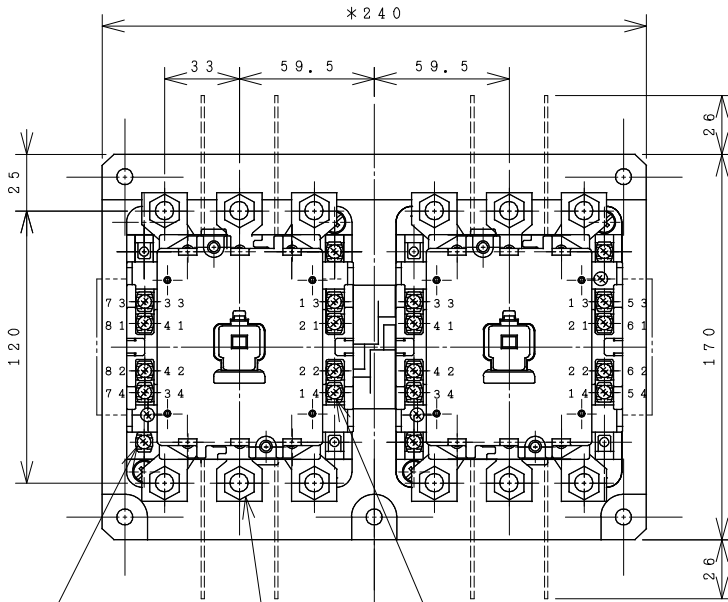


HITACHI ELECTROMAGNETIC CONTACTOR

Type	Rated insulation voltage (Ui)	Max. rated capacity of motor			Rated thermal current (AC1 = Ith)	Applicable standard	Aux. Contact	Weight
H125C-R	AC 660 V	240V	37kW	126A	150 A	IEC 60947-4-1	(2a2b) x 2	5.1 kg
		440V	60kW	125A				

*WITH AUX. CONTACT (3a3b) x 2 = 243 mm.

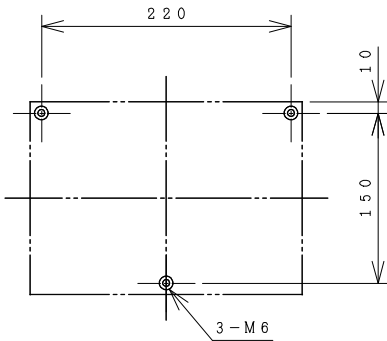


OUTLINE DIMENSIONS.

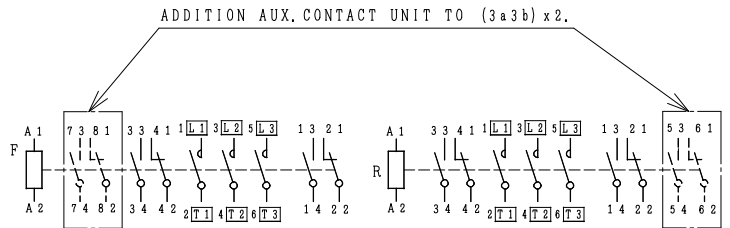
COIL TERMINAL
M3.5 SCREW
(W=7.8)

TERMINAL
M8 BOLT
(W=22)

AUX. TERMINAL
M3.5 SCREW
(W=7.8)



MOUNTING HOLES.



CONTACTS ARRANGEMENT.

(Reference 43056002R01).

*REMARK

- DIMENSION UNIT = Millimeter (mm.).
- (a) = AUX. CONTACT NORMALLY OPENED.
- (b) = AUX. CONTACT NORMALLY CLOSED.

DWN. S. CHAIAMPOL	20/08/16	PROJECTION	TITLE
CHKD. <i>Jan-a</i>	S	SCALE NTS.	DIMENSION OF H125C-R
APPD. <i>C.Kiattisak</i>			
HITT WORKS DWG. No.			REV.
HITACHI Hitachi Industrial Technology (Thailand), Ltd.			00
			01
			01

(W=) : WIDTH OF TERMINAL.

4HTN000884