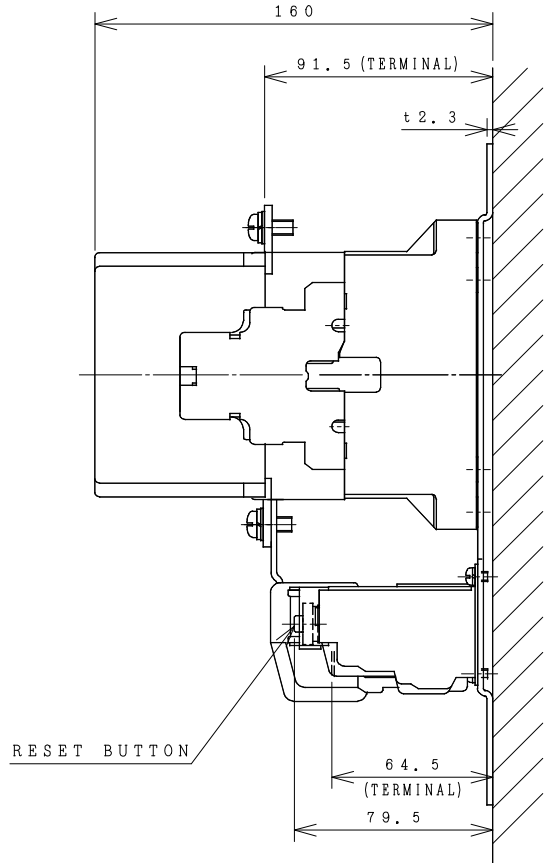
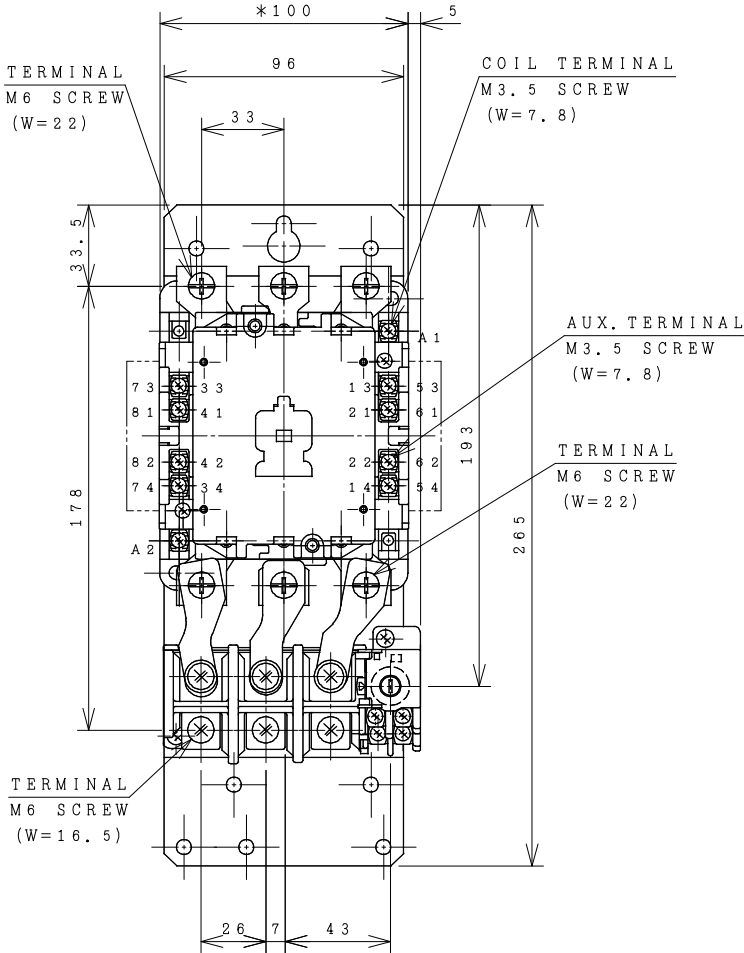


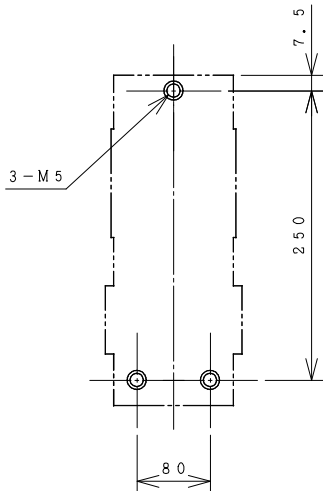
HITACHI ELECTROMAGNETIC SWITCH

Type	Rated insulation voltage (Ui)	Max. rated capacity of motor			Rated thermal current (AC1 = Ith)	Applicable standard	Aux. Contact	Weight
H80C-T	AC 660 V	240V	22kW	80A	120 A	IEC 60947-4-1	2a2b	2.8 kg
H80C-TK		440V	37kW	80A				

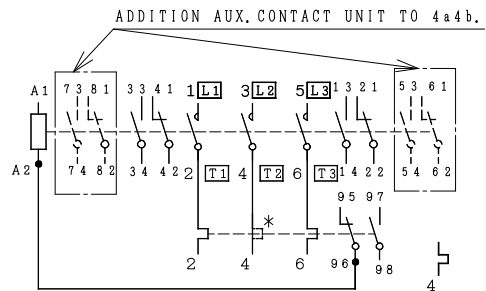
*WITH AUX. CONTACT 4a4b = 124 mm.



OUTLINE DIMENSIONS.



MOUNTING HOLES.



*IN CASE OF 2E THERMAL OVERLOAD RELAY.

CONTACTS ARRANGEMENT.

(Reference 43055978R04).

DWN. S. CHAIAMPOL	09/08/16	PROJECTION	TITLE
CHKD. <i>Jan-a</i>	S	SCALE NTS.	DIMENSION OF H80C-T, TK
APPD. <i>C.Kiattisak</i>			
HITACHI Hitachi Industrial Technology (Thailand), Ltd.			4HTN000864
			REV.
			00
			SH.
			01
			01

(W=) : WIDTH OF TERMINAL.

*REMARK

- DIMENSION UNIT = Millimeter (mm.).

- (a) = AUX. CONTACT NORMALLY OPENED.

- (b) = AUX. CONTACT NORMALLY CLOSED.