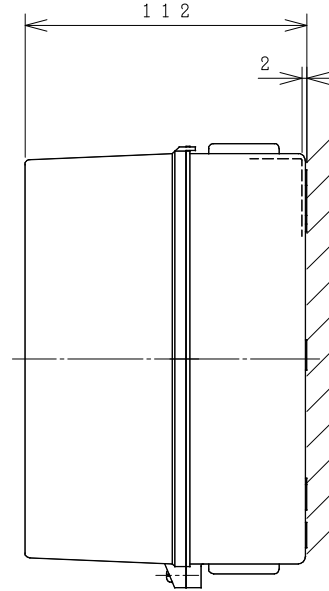
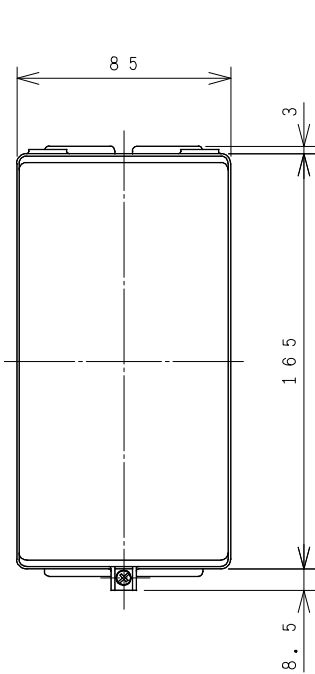
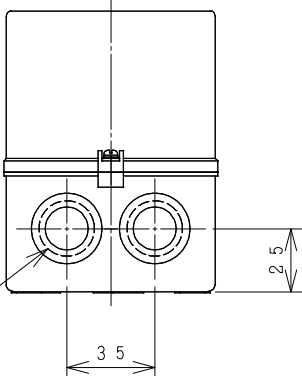


HITACHI ELECTROMAGNETIC SWITCH

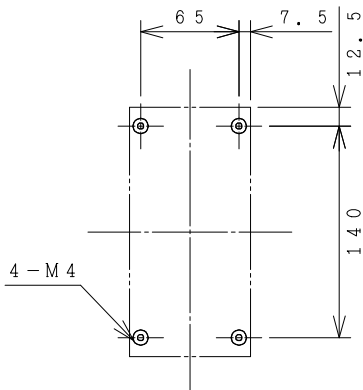
Type	Rated insulation voltage (Ui)	Max. rated capacity of motor			Rated thermal current (AC1 = Ith)	Applicable standard	Aux. Contact	Weight
		240V	3kW	12A				
SH11-T	AC 660 V	240V	3kW	12A	15 A	IEC 60947-4-1	1a1b or 2a, 2b	0.64 kg
SH11-TK		440V	4kW	9A				



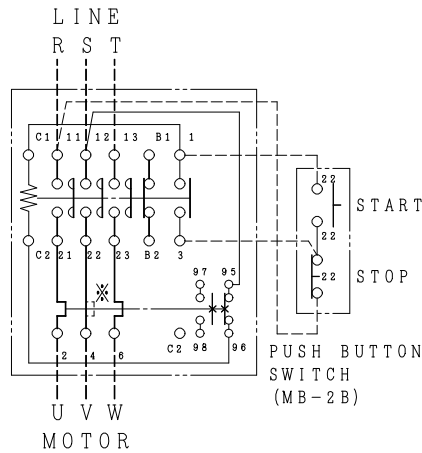
OUTLINE DIMENSIONS.



φ 22 KNOCKOUT (EACH FOR THE TWO UP AND DOWN.)



MOUNTING HOLES.



CONTACTS ARRANGEMENT.

(Reference 43046403R01).

REMARK

- DIMENSION UNIT = Millimeter (mm).
- (a) = AUX. CONTACT NORMALLY OPENED.
- (b) = AUX. CONTACT NORMALLY CLOSED.

IN CASE OF 2E THERMAL OVERLOAD RELAY.

DWN.	C. JERRANAN	19/09/16	PROJECTION	TITLE
CHKD.	<i>C. Kittisak</i>		SCALE	DIMENSION OF SH11-T, TK
APPD.	<i>T. Kittisak</i>		NTS.	
<p>HITACHI Hitachi Industrial Technology (Thailand), Ltd.</p>				<p>HITT WORKS DWG. No.</p> <p>4 HTN000848</p>
				<p>REV.</p> <p>00</p> <p>SH.</p> <p>01</p> <p>01</p>

(W=) : WIDTH OF TERMINAL.