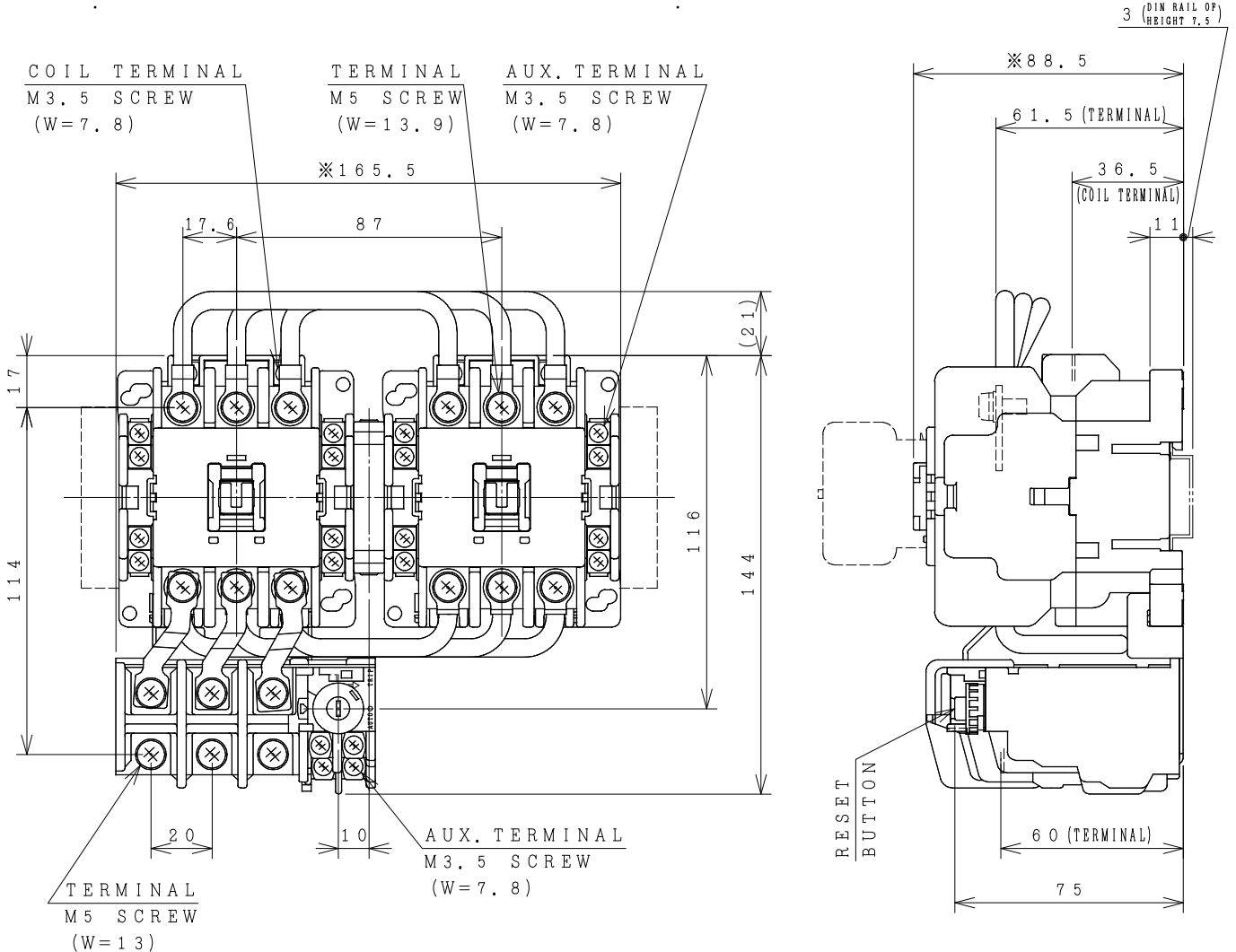


HITACHI ELECTROMAGNETIC SWITCH

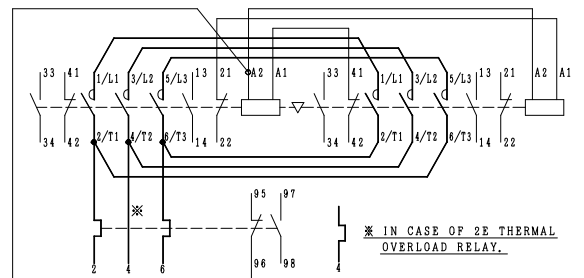
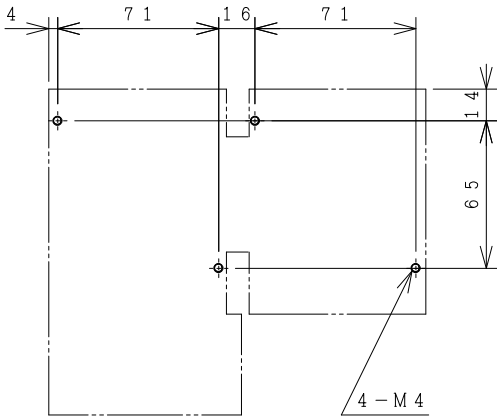
| Type | Rated insulation voltage (Ui) | Max. rated capacity of motor | | | Rated thermal current (AC1 = Ith) | Applicable standard | Aux. Contact | Weight |
|----------|-------------------------------|------------------------------|------|-----|-----------------------------------|---------------------|--------------|------------|
| | | 240V | 15kW | 50A | | | | |
| HS50-RT | AC 690 V | 240V | 15kW | 50A | 70 A | IEC 60947-4-1 | 2a2b x2 | 1.58 kg |
| HS50-RTK | | 440V | 22kW | 50A | | | | |

※WITH AUX. CONTACT SIDE ON UNIT = 189mm.

※WITH AUX. CONTACT HEAD ON UNIT = 120mm.



OUTLINE DIMENSIONS.



CONTACTS ARRANGEMENT.

MOUNTING HOLES.
(W=) : WIDTH OF TERMINAL.

※REMARK
- DIMENSION UNIT = Millimeter (mm).
- (a) = AUX. CONTACT NORMALLY OPENED.
- (b) = AUX. CONTACT NORMALLY CLOSED.

(Reference 43067260R07).

| | | | |
|--|----------|------------|------------------------------|
| DWN. O. SITTICHAJ | 20/08/16 | PROJECTION | TITLE |
| CHKD. <i>C. Kiattisak</i> | | SCALE | DIMENSION OF HS50-RT, RTK |
| APPD. <i>T. Kijisudh</i> | | NTS. | |
| HITT WORKS DWG. No. | | | REV. |
| HITACHI Hitachi Industrial Technology (Thailand), Ltd. | | | 00 |
| | | | 01 |
| | | | 01 |

4HTN000835