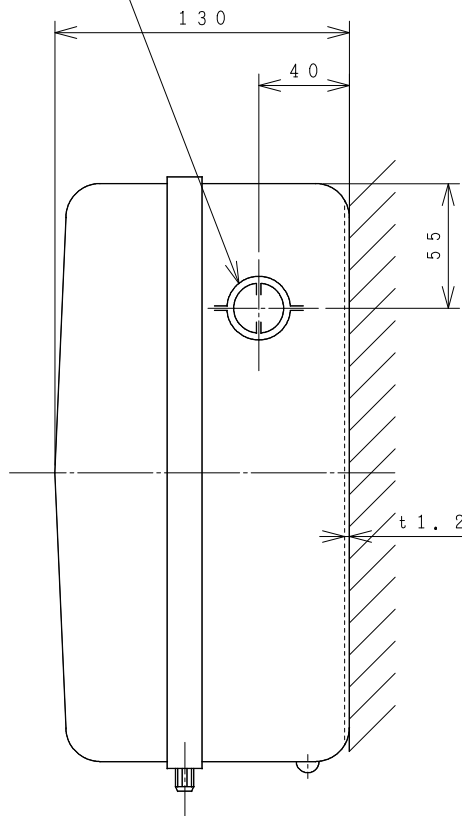
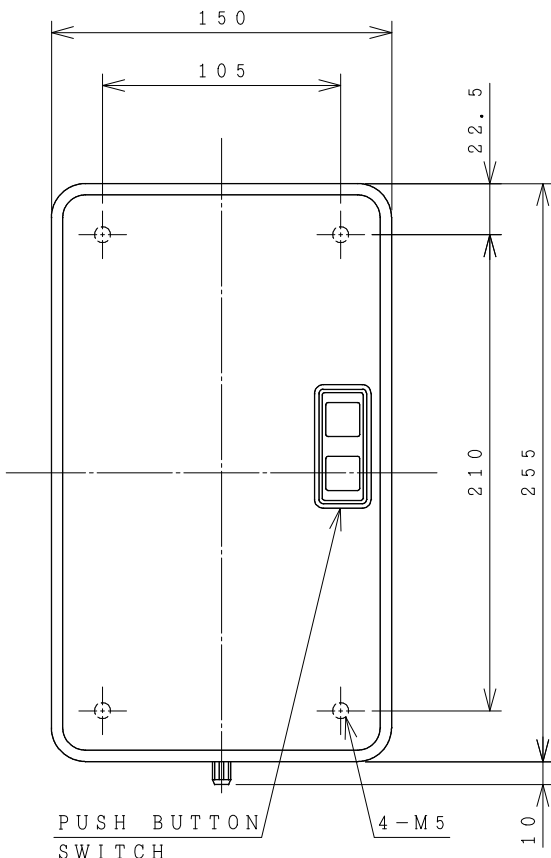


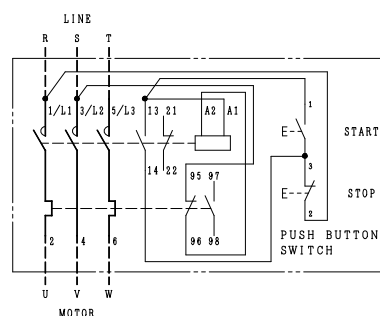
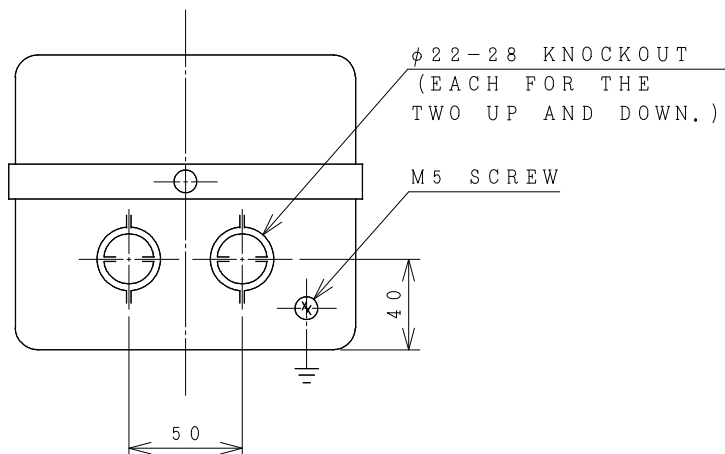
HITACHI ELECTROMAGNETIC SWITCH

| Type | Rated insulation voltage (Ui) | Max. rated capacity of motor | | | Rated thermal current (AC1 = Ith) | Applicable standard | Aux. Contact | Weight |
|----------|-------------------------------|------------------------------|-------|-----|-----------------------------------|---------------------|--------------------|-----------|
| | | 240V | 7.5kW | 27A | | | | |
| SHS25-TB | AC 690 V | 440V | 11kW | 26A | 35 A | IEC 60947-4-1 | 1a1b or 2a2b | 2.7 kg |
| | | 240V | 7.5kW | 27A | | | | |

φ 22-28 KNOCKOUT
(ONE ON EACH SIDE)



OUTLINE DIMENSIONS.



CONTACTS ARRANGEMENT.

(Reference 43068441R01).

※REMARK

- DIMENSION UNIT = Millimeter (mm).
- (a) = AUX. CONTACT NORMALLY OPENED.
- (b) = AUX. CONTACT NORMALLY CLOSED.

| | | TERMINAL SCREW | WIDTH OF TERMINAL |
|-------------------|----------------|----------------|-------------------|
| MAIN CIRCUIT | CONTACTOR | M5 | 10 |
| | OVERLOAD RELAY | M5 | 10 |
| OPERATION CIRCUIT | CONTACTOR | M3.5 | 7.8 |
| | OVERLOAD RELAY | M3.5 | 7.8 |

| | | |
|---|------------|-----------------------------------|
| DWN. O. SITTICHAJ 06/07/16 | PROJECTION | TITLE |
| CHKD. <i>C. Kiatissak</i> | SCALE NTS. | DIMENSION OF SHS25-TB |
| APPD. <i>T. Kiatissak</i> | | |
| HITACHI Hitachi Industrial Technology (Thailand), Ltd. | | HITT WORKS DWG. No. 4HTN000819 |
| | | REV. 00 SH. 01 01 |