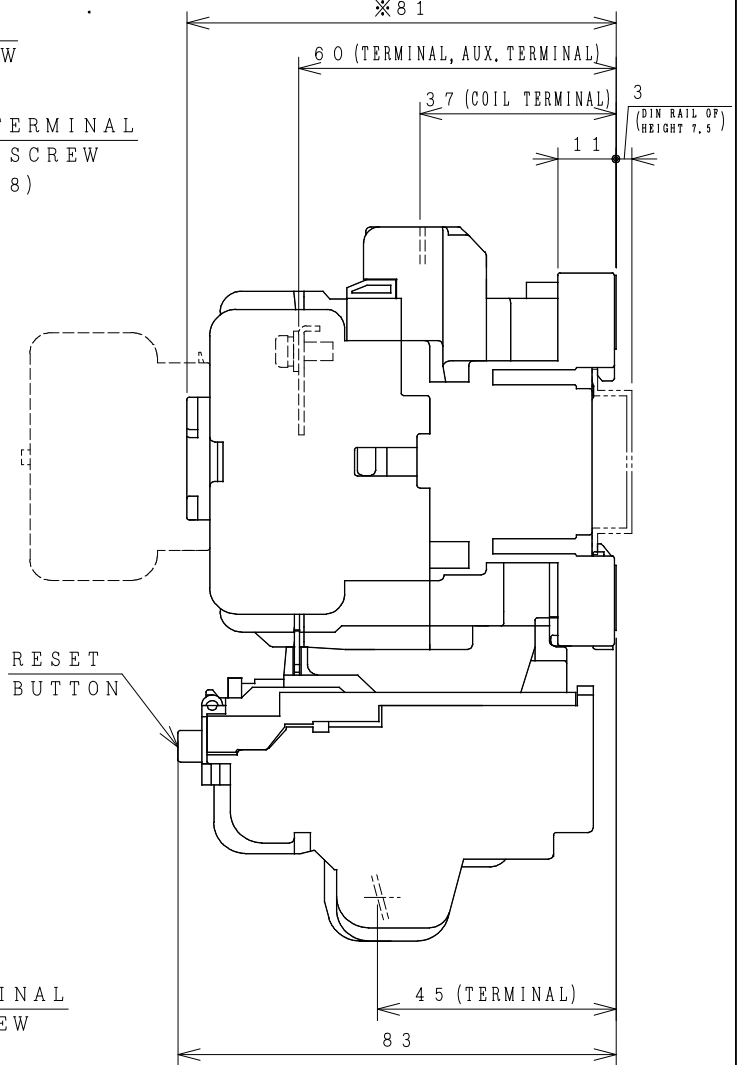
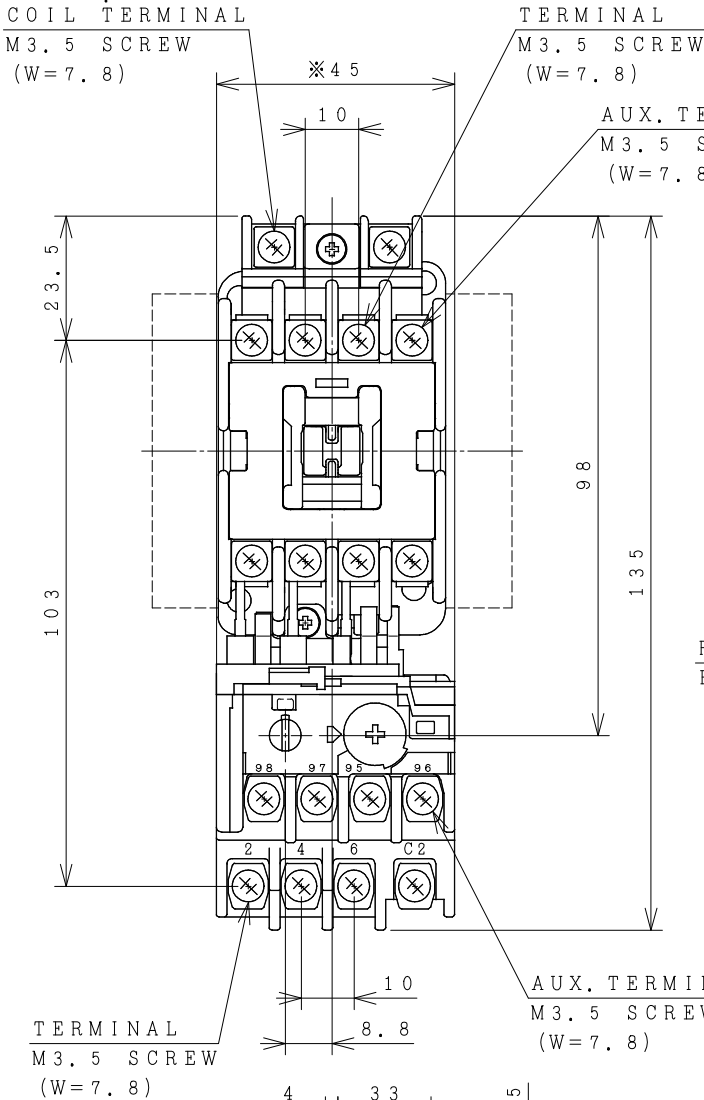


HITACHI ELECTROMAGNETIC SWITCH

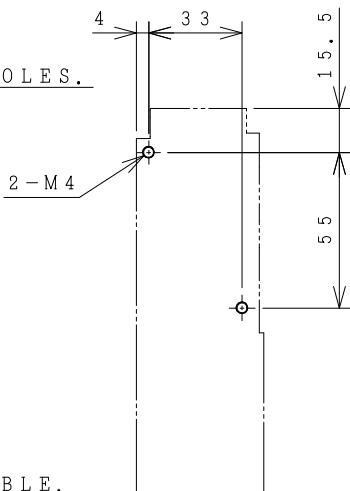
Type	Rated insulation voltage (Ui)	Max. rated capacity of motor			Rated thermal current (AC1 = 1th)	Applicable standard	Aux. Contact	Weight
		240V	2.5kW	11A				
HS8-T	AC 690 V	440V	4 kW	9A	20A A	IEC 60947-4-1	1a or 1b	0.45 kg

※WITH AUX. CONTACT SIDE ON UNIT = 68mm.

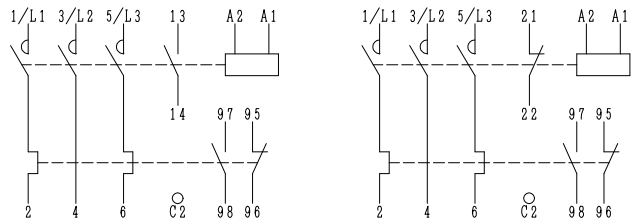
※WITH AUX. CONTACT HEAD ON UNIT = 112mm.



MOUNTING HOLES.



OUTLINE DIMENSIONS.



AUX. CONTACTS : 1 a
CONTACTS ARRANGEMENT.

(Reference 43067245R05).

- 30 x 48
- 34 x 48
- 34 x 52
- 35 x 50

ALSO POSSIBLE.
(W) : WIDTH OF TERMINAL.

※REMARK

- DIMENSION UNIT = Millimeter (mm).
- (a) = AUX. CONTACT NORMALLY OPENED.
- (b) = AUX. CONTACT NORMALLY CLOSED.

DWN. O. SITTICHAJ 23/06/16	PROJECTION	TITLE
CHKD. <i>C. Kiattisak</i>	SCALE	DIMENSION OF HS8-T
APPD. <i>T. Kijisudh</i>	NTS.	
HITT WORKS DWG. No.		REV.
HITACHI Hitachi Industrial Technology (Thailand), Ltd.		00
		01
		01
		01

4HTN000783