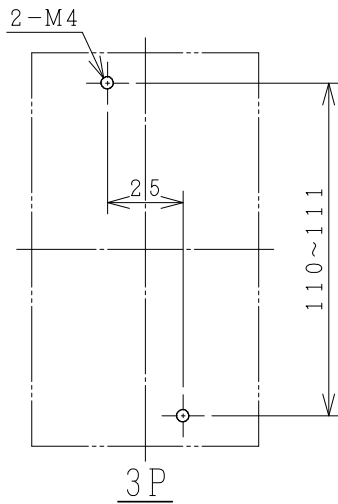
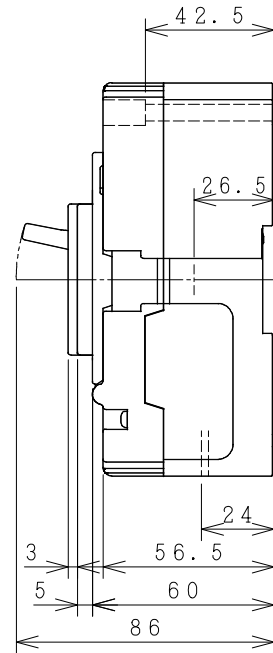
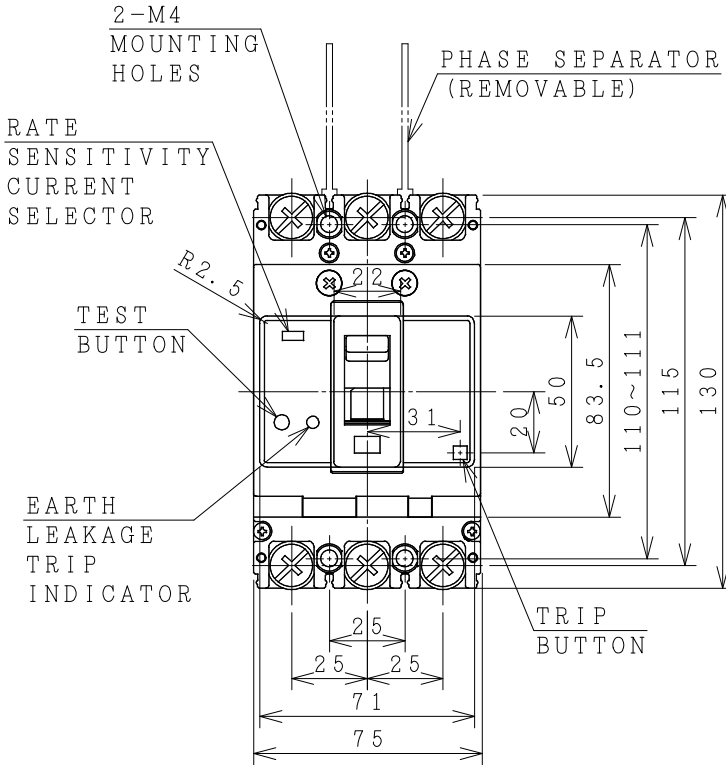
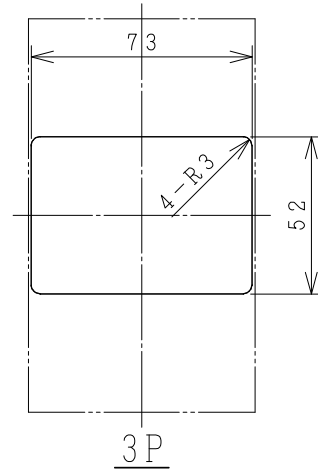


HITACHI EARTH LEAKAGE CIRCUIT BREAKER

Type	Poles	Rated Insulation Voltage (Ui)	JIS C 8201-2-2		Rated Current	Base Ambient Temperature	Weight
			Icu/Ics [kA]	230V			
EXK60	3	690	15/8	7.5/4	15 20 30	40	0.74
RXK60			35/18	10/5	40 50 60		



DRILLING PLAN.



3P

FRONT PLATE CUTOUT.

THESE DIMENSIONS THE HEIGHT OF FRONT PLATE FROM BASE OF CASE TO COVER IS 68mm.
 -CLEARANCE 1mm ON EACH SIDE OF HANDLE.

ACCESSORIES		
Part	Size	Q'ty
Phase separator	-	4
Terminal screw/bolt (50A or less)	M5x14	6
Terminal screw/bolt (60A or more)	M8x14	6
Mounting screw	M4x55	2
Assistant handle	-	-
Interior accessories	AL, AUX, SHT	

DWN.	O. SITTICHAJ	09/07/20	PROJECTION	TITLE
CHKD.	<i>Ch. Chantak</i>	S	SCALE NTS.	DIMENSION OF EXK60, RXK60
APPD.	<i>P. Saengai</i>			
				HITT WORKS DWG. No.
HITACHI Hitachi Industrial Technology (Thailand), Ltd.				4HTN001269
				REV.
				00
				SH.
				01
				01

(Reference 33059470, 33059477.)

*REMARK

-DIMENSION UNIT = Millimeter (mm).